



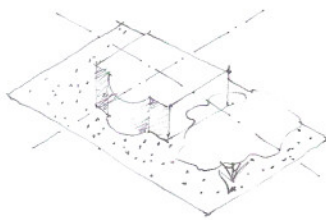
CLIENT SANGHAMITRA BOSE LOCATION DELHI YEAR OF COMPLETION 2007 SITE AREA 420 sq.m BUILT AREA 243 sq.m COST INR 2.3 MILLION ARCHITECT VSPB ASSOCIATES DESIGN TEAM SUPTENDU BISWAS, VINA VERGHESE BISWAS CONSULTANTS DIPAK CHAKRABORTY (STRUCTURAL) CONTRACTORS PHOOL SINGH PHOTOGRAPHS VSPB ASSOCIATES



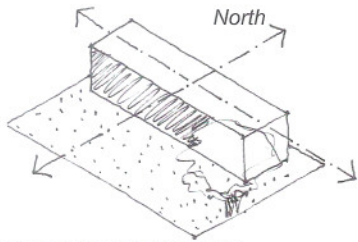
48 A-ROUND IN A GARDEN

The centrifugal design organises the functions of the house around a circular garden carved into a rectangular block. Nestled among the trees, the design of this sprawling house reminiscent of a colonial villa begins with the idea of a 'garden house' or a house around a garden.

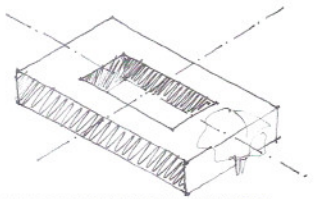
A single block oriented north-south contains the programmatic requirements of the house and is wrapped around a central landscaped court. The dynamism of the shaded semi-circular verandah and the curvilinear wall with large openings add to the seamless connect among internal spaces, which is re-inforced by the absence of doors within the house.



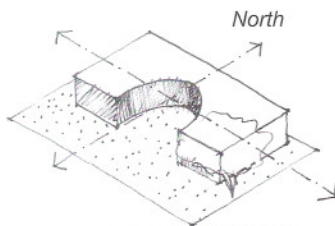
NOSTALGIA: HOUSE IN THE GARDEN
[COLONIAL BLOCK]



SCIENTIFIC: CLIMATIC ORIENTATION
[MODERNIST BLOCK]

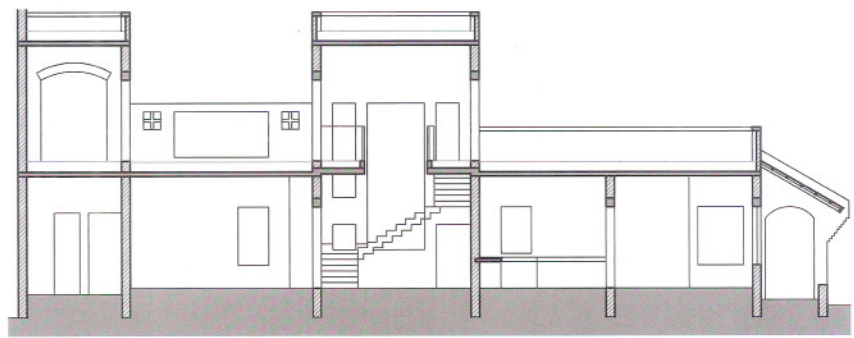


ARCHETYPE: GARDEN AS A COURTYARD INSIDE
[COURTYARD BLOCK]

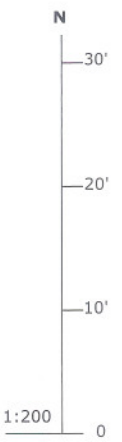


GARDEN HOUSE: HOUSE AROUND THE GARDEN
[HYBRID BLOCK]

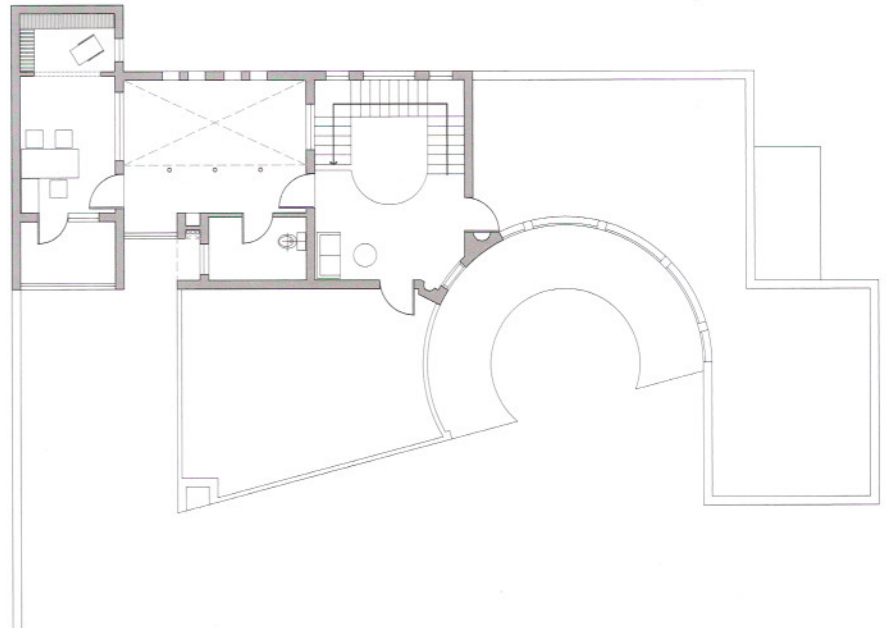
CONCEPT DIAGRAMS



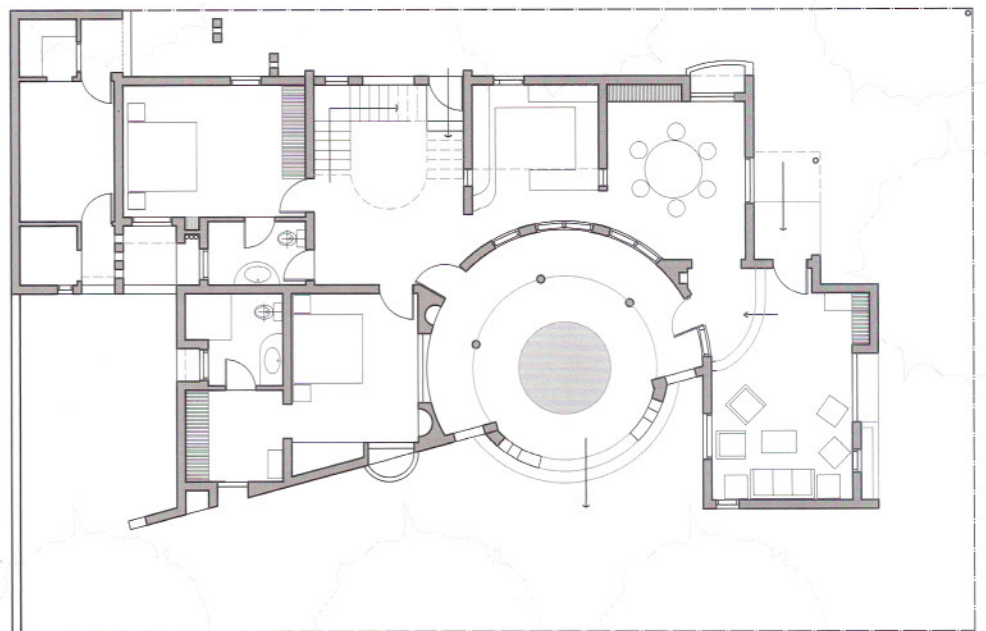
SECTION



1:200



FIRST FLOOR PLAN



GROUND FLOOR PLAN